



- Reception and processing of the GPS-signal
- Temperature and light sensor
- World-wide applicable
- Operation indicator: flashing LEDs
- Compact housing
- Simple mounting
- The course of the angle of solar radiation during the day. [Usable e.g. for sun-blind controls, solar collectors]
- Sunrise and sunset times
- Temperature control
- Light control
- Twilight switch with daily program
- Daily time switch
- Astronomic time switch

Following data and functions will be provided to the KNX bus:

- Time base
- Geographical position: Latitude and Longitude

Connect

switching controlling counting

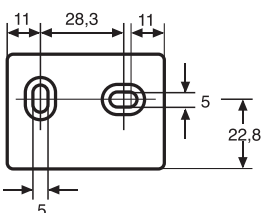
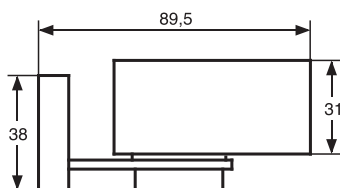
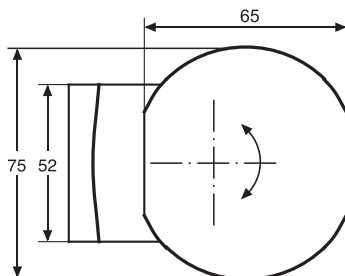
Sensor stations FU 40.00 knx for wall mounting

Highlights

- Light/brightness sensor
- Temperature sensor
- Time base
- Geographical data

Technical data

Power supply	via KNX bus voltage
Bus current	approx. 10 mA
Bus system	KNX
Antenna	GPS receiver
Operation indicator	internal LED flashing on signal reception
Permitted ambient temperature	-30°...+55°C
Housing	self-extinguishing thermoplastic
Mounting	wall mounting (with included bracket)
Type of protection	IP 54 (DIN EN 60529)
Type of connection	KNX bus terminal



Order number	Version
FU 40.00 knx	for wall mounting (with included bracket)
□ Housing colour	