



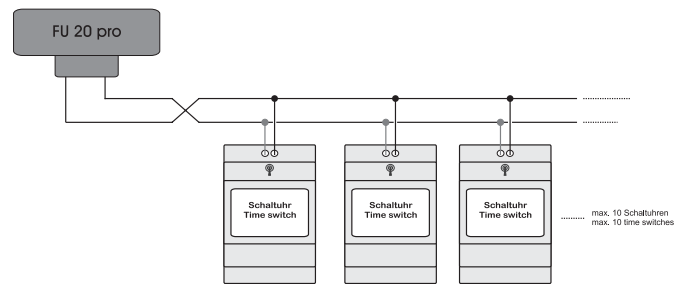
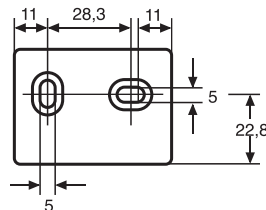
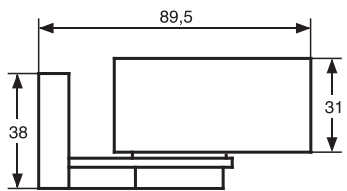
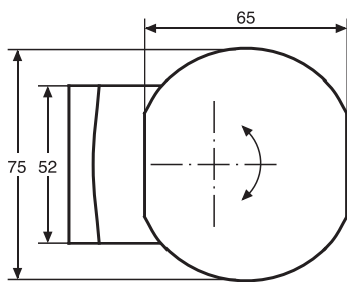
- One receiver can connect to 10 time switches
- DCF 77 radio link with FU 20.00 pro
- Time and date are automatically transferred to the clock
- Fully automatic summertime (European standard)
- Operation indicator: flashing LED on receiving
- Compact housing
- Simple mounting with fastening angle, receiver is rotatable
- Connection wire specifications: 2-wire, no shield, variable core cross-section
- Max. length of wire between receiver and time switch 200 m



Range of the signal approx. 1500 km

Radio Receiver DCF-Time FU 20.00 pro for wall mounting

Technical data	
Power Supply	Via time switch or master clock (without battery)
Output	DCF-protocol
Receiver	narrowband-heterodyne receiver
Operation indicator	flashing LED on receiving
Consequence of an interference with reception	time switches use their quartz as time base
Antenna	built-in ferrite rod
Permitted ambient temperature	-20°...+50°C
Housing	self-extinguishing thermoplastic
Mounting	Fastening angle for wall mounting (receiver is rotatable)
Type of protection	IP 54 (DIN EN 60529)
Recommended cable	Shielded / Section 0.33 up to 2.5 m ²
Type of connection	Power supply and DCF protocol via 2-wire-connection. Accessory for hugomüller time switches and master clocks. [Special model: FU 21.00 pro with 3-wire-connection for alternative applications / external power-supply required / technical details and further information on request]



Order number	Version
FU 20.00 pro	for wall mounting (receiver is rotatable)
▼ Housing colour	