



Manual PC Programming-Software **Save `n carry PLUS**

The PC-Software Save`n carry plus allows easy creation and quick modification of switching programs, up- and download from data storage key (SC 88, SC 98) to PC and vice versa using time switches SC 08, SC 88 or SC 98.

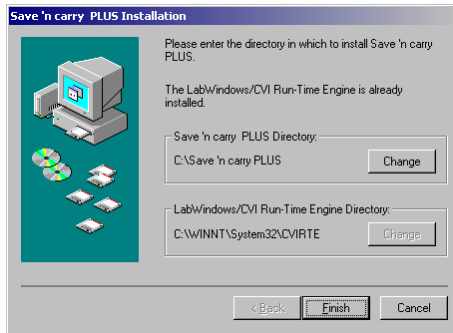
Hugo Müller GmbH
Elektrotechnik
Sturmbühlstr. 145-149
78054 VS-Schwenningen
Phone 07720/31081
Fax 07720/31083
info@hugo-mueller.de
www.hugo-mueller.de

Tabel of content

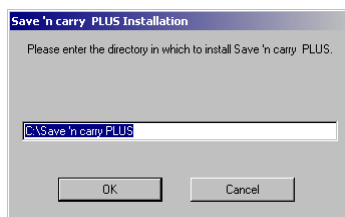
Installation of software and hardware	2
Starting program and configuration of language and serial port	3
Creating a new switching program for the SC 83/88	4
Creating a new switching program for the SC 93/98	6
Priorities of the normal program, special program and the date program	10
Saving the project in the data storage key	10
Loading a project from the data storage key.....	11
Guideline for the Data Storage Key	12
Creating a new switching program for the SC 08	12
Activation/ deactivation of the summer/wintertime changeover	15
Saving the project in the logic unit of the SC 08	15
Auto increment – Function.....	16
Saving programs	17
Loading programs.....	17
Printing programs	18

Installation of software and hardware

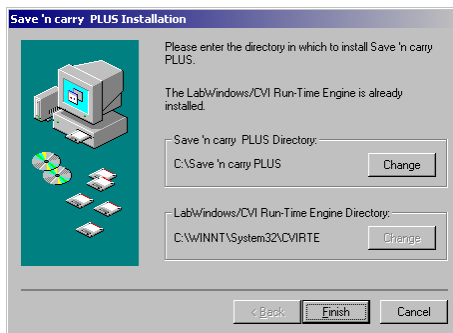
Please insert CD – ROM into the disc drive of your PC, the CD starts automatically. Please choose “Installation Save `n carry PLUS“.



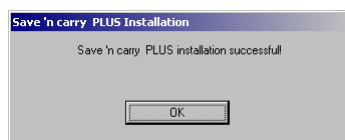
The default directory for installation is Save `n carry PLUS in the root of your hard disk (C:\). You can choose your own folder by clicking the button *change*.



Enter drive letter and folder as requested and confirm your selection by clicking the *OK* button.

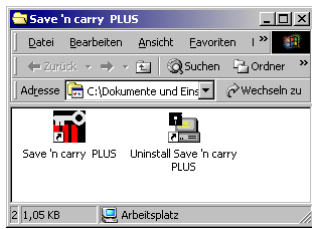


Click *finish* to save the new configuration and to proceed the installation process.



After successful installation you get this message. Please confirm by clicking the *OK* button.

Starting the program and configuration of language and serial port



Explorer view: Large icons

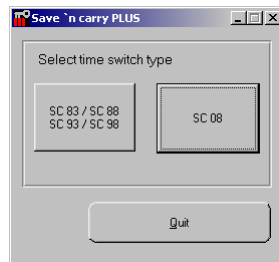
Now you can see the window shown on the left.

Connect the programming adapter to your PC (serial port).

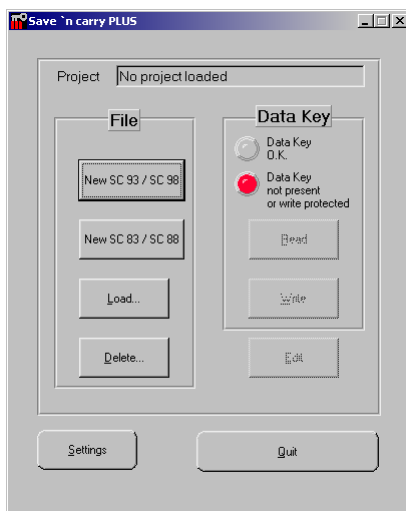
Start Save`n carry PLUS by double clicking the icon.

You can also start the program by selecting **Save`n carry PLUS** in the start menu (Programs -> **Save`n carry PLUS**).

You can remove the software from your PC by selecting *Uninstall Save`n carry PLUS*.



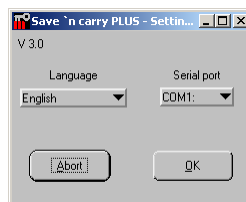
You can choose the time switch type by clicking the corresponding button.



Selection: SC 83 / SC 88
SC 93 / SC 98

You will see the main window on the screen.

To configure the language and serial port please click *settings*.

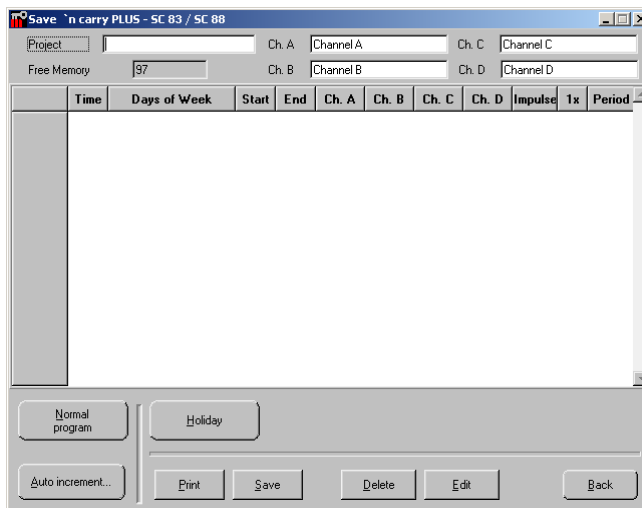
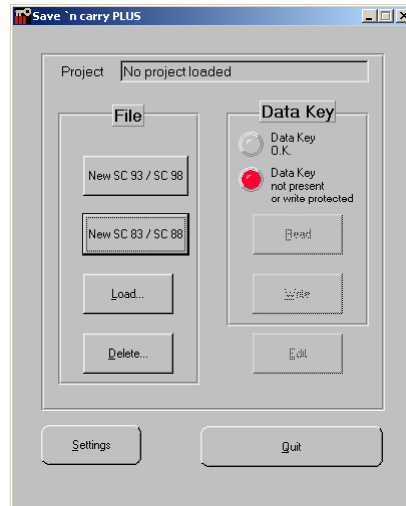


You can choose COM1 to COM4 and your preferred language. Confirm the selections by clicking the *OK* button.

Please check the configuration of the COM port if you cannot close the window by clicking the *OK* button.

Creating a new switching program for the SC 83/88

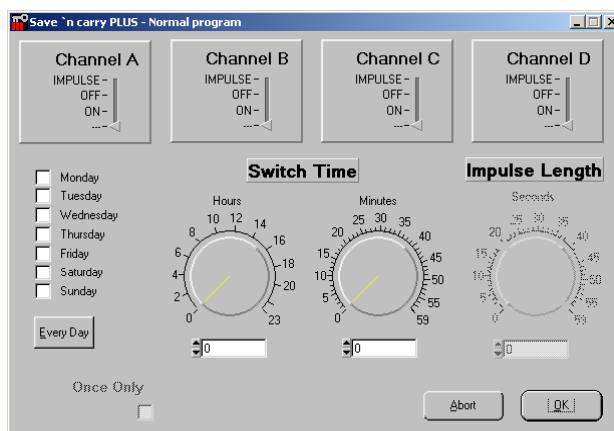
Please click button *New SC83/SC88*.



You will see the programming table for the switching functions on the screen.

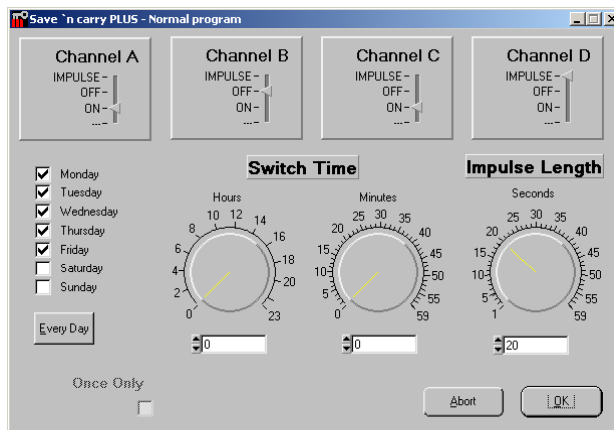
You can define a name for your project and the different switching channels.

To create a switching time function please click *Normal program*.



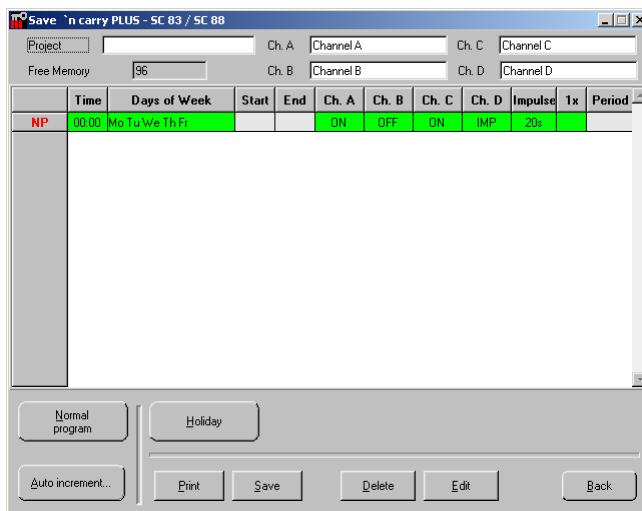
Here you can select the switching time, switching function and choose the required days.

If you have selected only one day it is possible to check *Once only*. That means automatic deletion of the programmed function after execution.



You can choose 1 to 59 seconds using the impulse function on a channel.

Confirm by clicking the OK button.

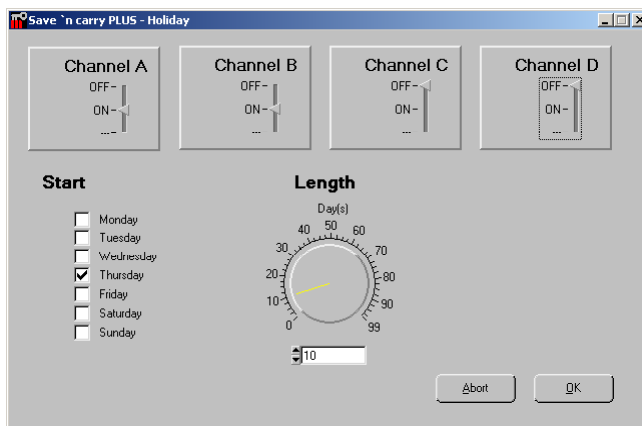


Now you will see the configured switching time in the programming table.

You can delete or modify a switching time by highlighting it (click on) in the table and clicking Delete or Edit.

To create another switching time/function click on *Normal program*.

To use holiday programming click the *Holiday* button.



In this window you select the starting day, switching function and duration of the holiday program.

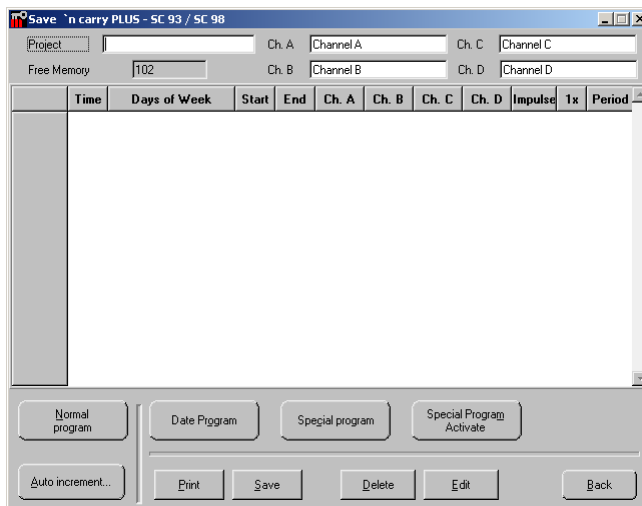
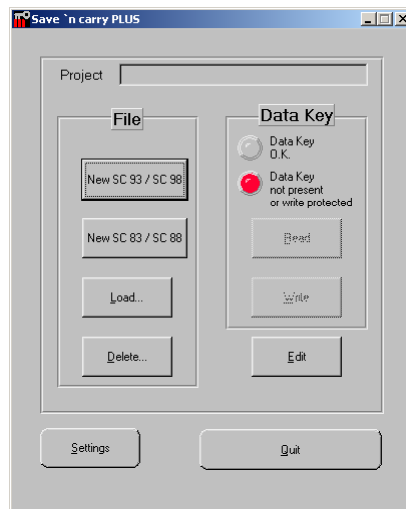
Confirm by clicking the OK button.



The holiday program is shown in the programming table.

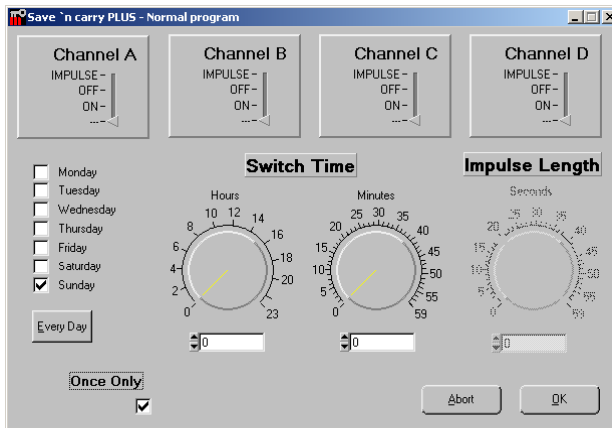
Creating a new switching program for the SC 93/98

Click on *New SC 93/SC 98* button.



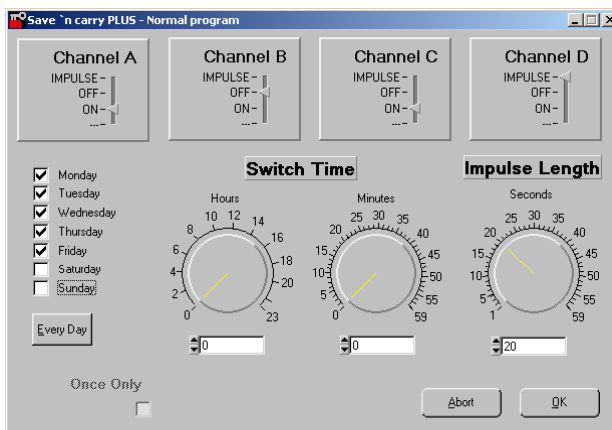
You can see the programming table for the switching functions on the screen. You can define a name for your project and the different switching channels.

To create a switching time/ function click *Normal program*.



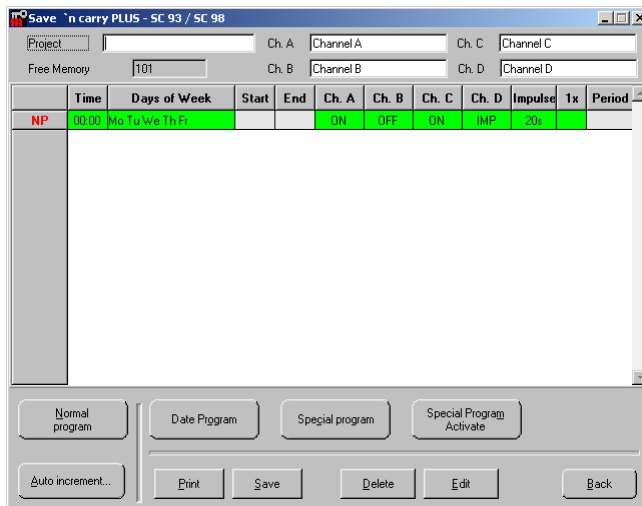
Here you can select the switching time, switching function and choose the required days.

If you have selected only one day it is possible to check *Once only*. That means automatic deletion of the programmed function after execution.



You can choose 1 to 59 seconds using the impulse function on a channel.

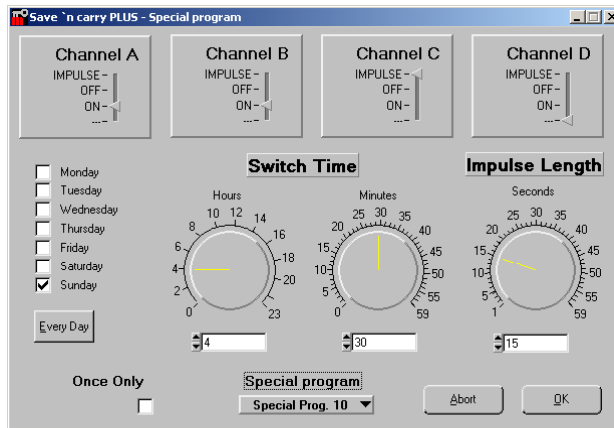
Confirm by clicking the *OK* button.



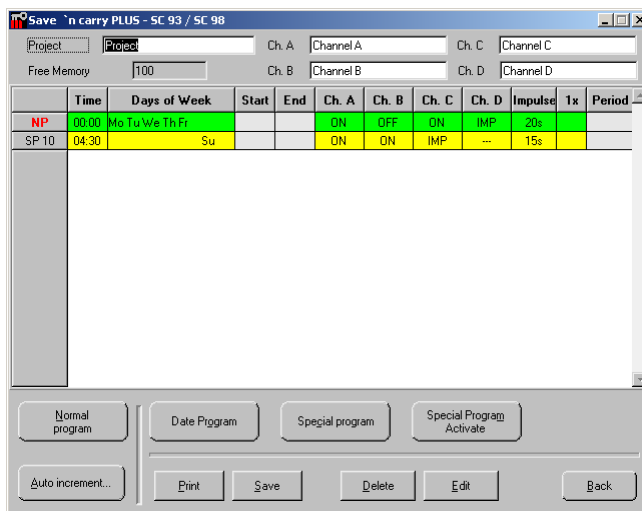
Now you will see the configured switching time in the programming table.

You can delete or modify a switching time by highlighting it (click on) in the table and clicking *Delete* or *Edit*.

To use a special program click *Special program*.

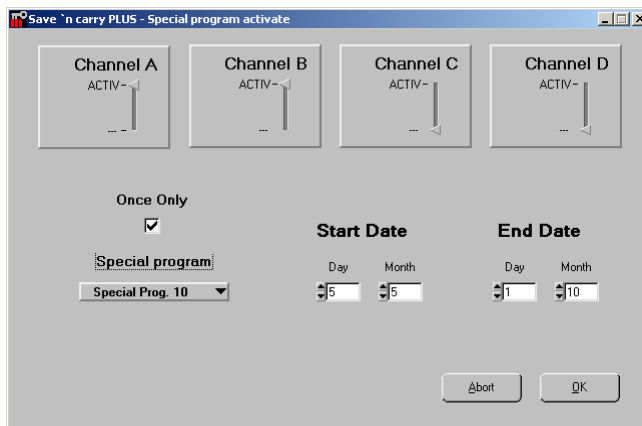


You can see the same window as before after clicking *Normal program*. In addition to the possible selections, you have to choose the special program from SP 01 to SP 15 for this switching time.



You can see the configured switching time (special program) in the programming table, too.

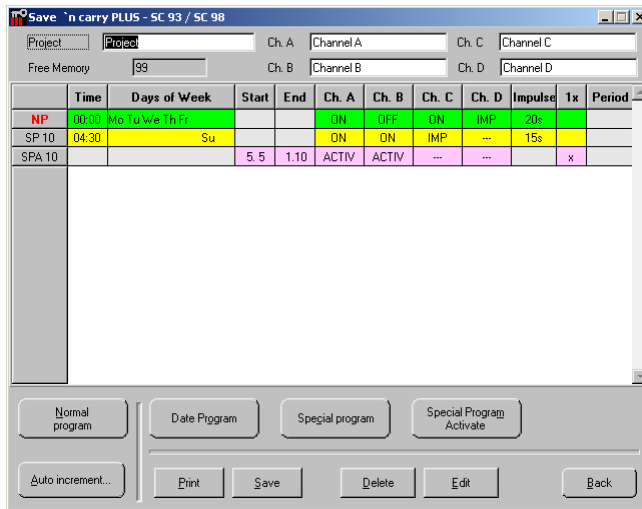
To use this special program you have to activate it by clicking the button *Special Program Activate*.



You can see the input mask for activating special programs. You have to select the date of start and end, the required channels and the special program SP xx as configured before.

The activated special program always starts at 0:00 AM on the start date and ends at 12:00 PM on the end date.

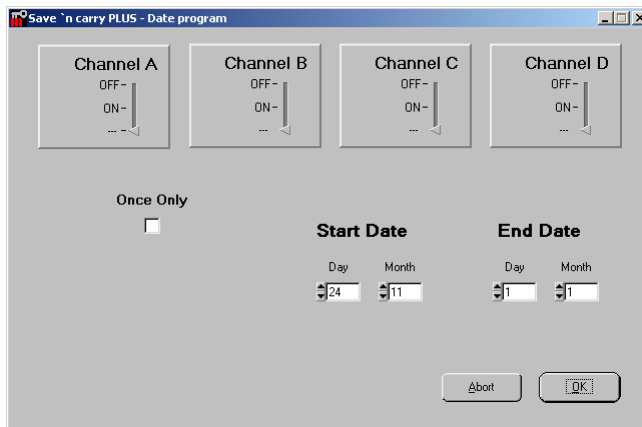
If you have checked *Once only*, the programmed function is automatically deleted after execution.



Confirm by clicking the *OK* button.

Activation of the special program is also shown in the programming table.

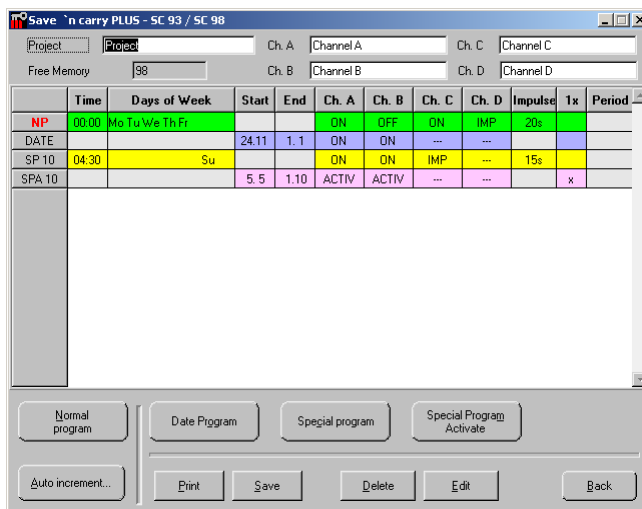
To use programming by date please click *Date Program*.



Here you can define switching on and off of required channels, and overriding the normal and special programs.

It is also possible to use *Once only*.

Please confirm by clicking the *OK* button.



You can see the configured switching program in the programming table.

Priorities of the normal program, special program and the date program

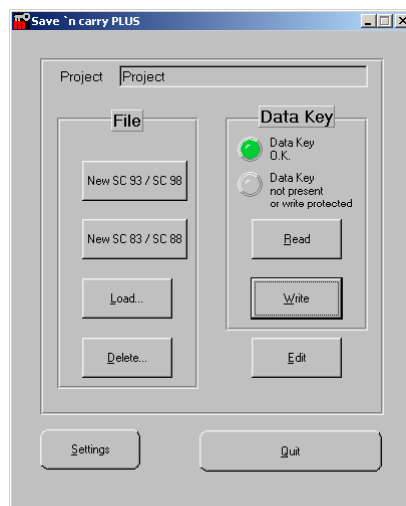
If a date program or a special program is activated, the normal program is disabled.

If there are several special or date programs, the program with the highest priority is used.

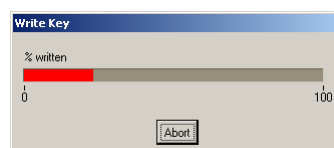
Highest priority	Date Program
↑	SP 15
↑	↑
↑	SP 01

Lowest priority Normal switching time

Saving the project in the data storage key



Insert the data storage key into the programming adapter. The lamp should turn from red to green and the buttons *Read/ Write* should be enabled.



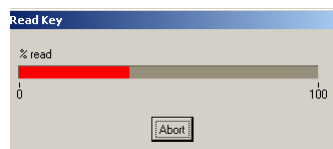
If you have inserted a data storage key into the programming adapter you can program the key by clicking the *Write* button in the main window.

The program is stored into the key.

Loading a project from the data storage key

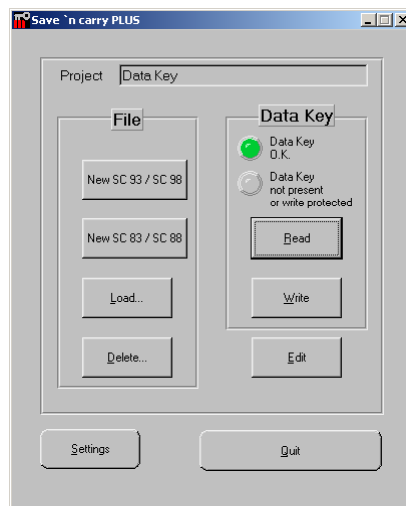


Insert the data storage key into the programming adapter. The lamp should turn from red to green and the buttons *Read/ Write* should be enabled.



If you have inserted a data storage key into the programming adapter you can download the program from the key by clicking the *Read* button in the main window.

The program is downloaded from the key.



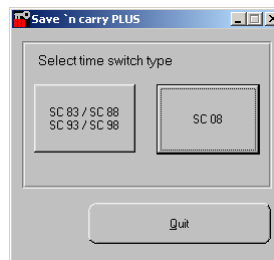
The name of the loaded project is shown as “Data key” in the main window.

To modify, click the button *Edit*.

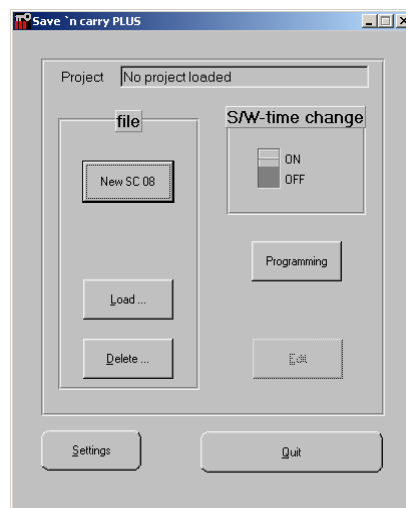
Guideline for the Data Storage Key

1. You can protect the data storage key from being overwritten by the program. (Please have a look at the manual from your programmable time switch.)
 2. If the key is not protected against overwriting, it is possible to change the program on the key.
 3. E.g. you can store a program for a 4-channel time switch into a 2-channel time switch. The missing channels are shown in the mode ?.
 4. E.g. you can load a program for a 2-channel time switch into a 4-channel time switch, it is possible to delete existing programs for the channels 3 and 4.
-

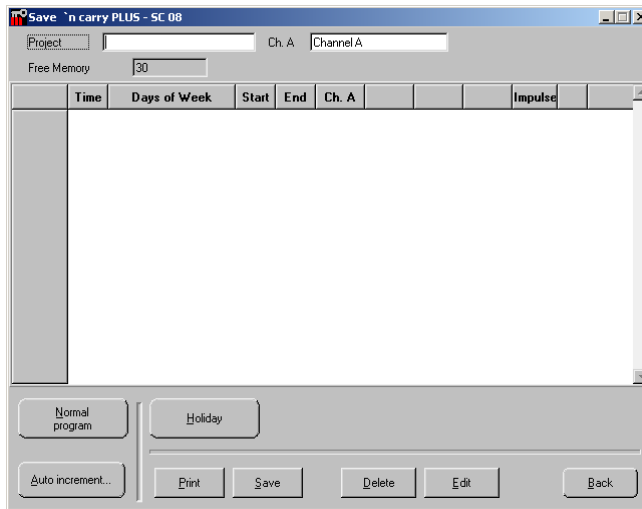
Creating a new switching program for the SC 08



Start the Save`n carry software and select SC 08 by clicking the corresponding button.

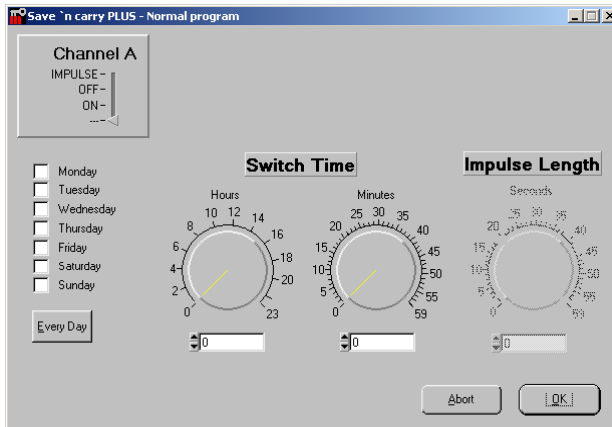


Click button New SC 08.

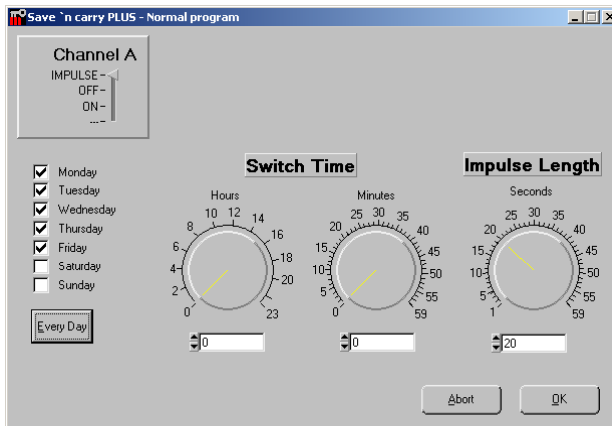


You can see the programming table for the switching functions on the screen. You can define a name for your project and the different switching channels.

To create a switching time/ function Click the *Normal program* button.

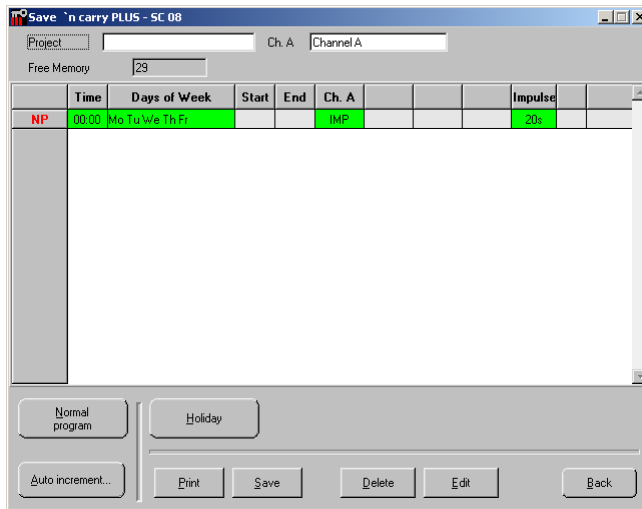


Here you can select the switching time, switching function and choose the required days.



You can choose 1 to 59 seconds using the impulse function on the channel.

Confirm by clicking the *OK* button.

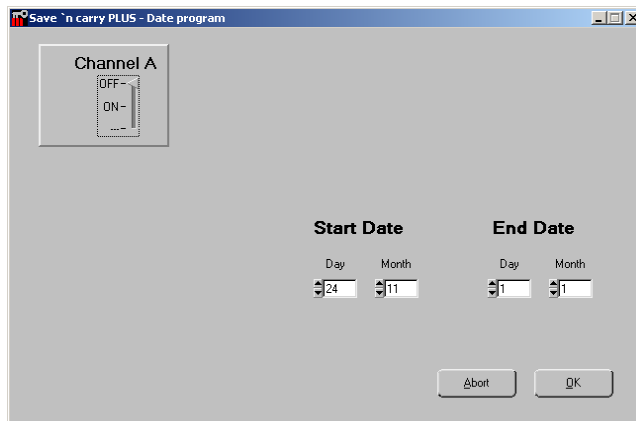


Now you can see the configured switching time in the programming table.

You can delete or modify a switching time by highlighting it (click on) in the table and clicking *Delete* or *Edit*.

To create another switching time/function please click on *Normal program* again.

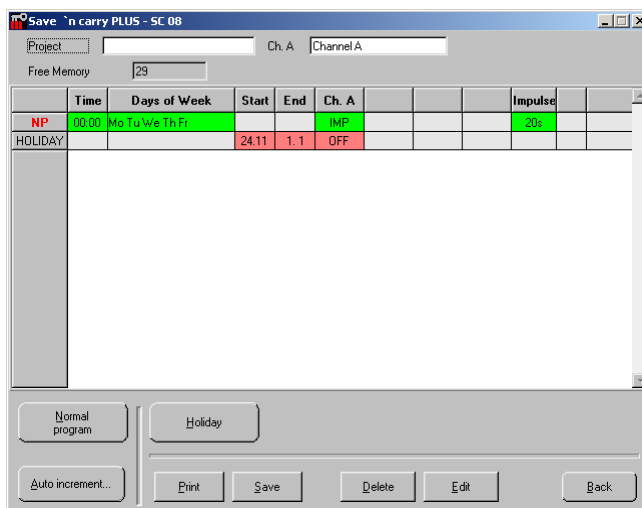
To use holiday programming please click the *Holiday* button.



In this window you select the starting day, switching function and duration of the holiday program.

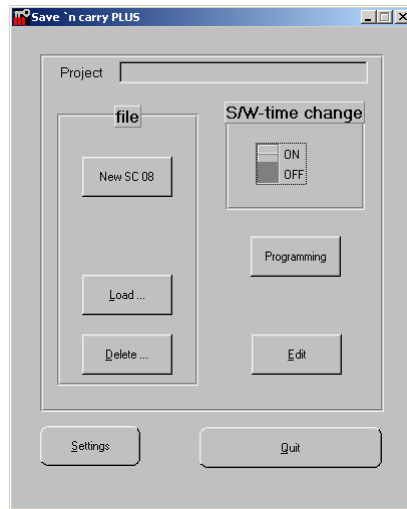
Confirm by clicking the *OK* button.

The created program will be deleted automatically after execution.



The holiday program is also shown in the programming table.

Activation/ deactivation of the summer / wintertime changeover

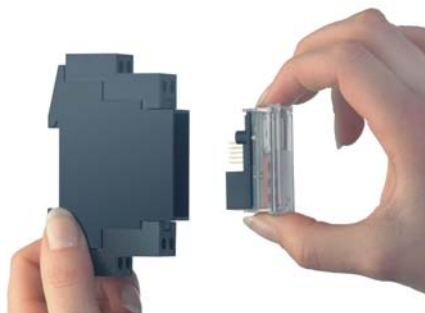


You can select automatic S/W-time change on or off using the switch *S/W-time change*.

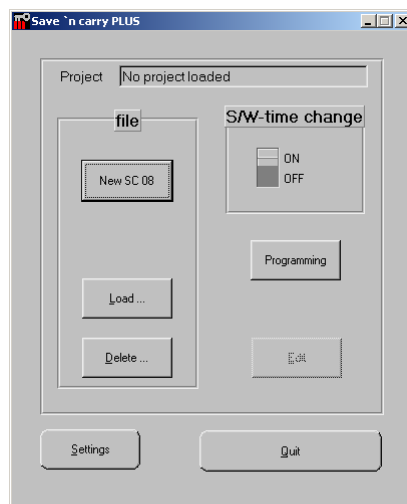
The time changeover is executed automatically according to the “European Regulation” (30.05.1994).

Start: Last Sunday in March
End: Last Sunday in October

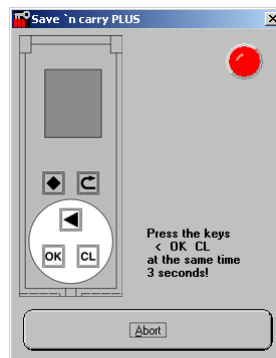
Saving the project in the logic unit of the SC 08




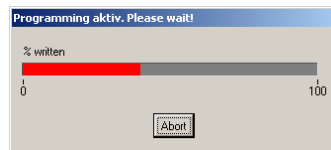
Simply remove the logic module from the base unit.



Click the *Programming* button.



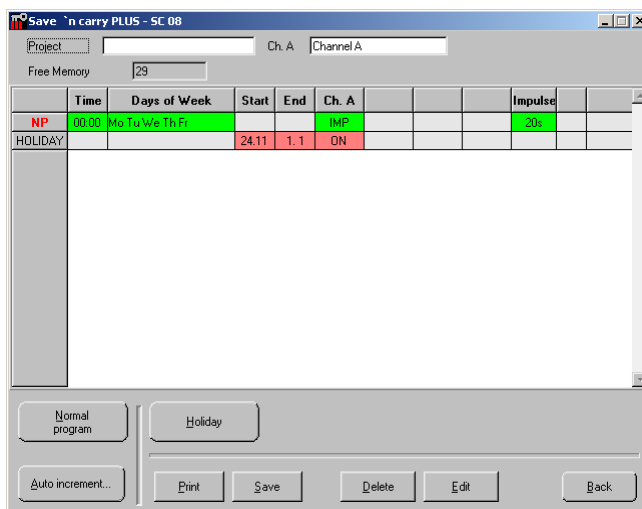
Press these keys  at the same time for 3 seconds, a new window will appear.



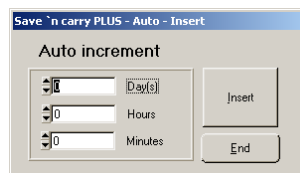
The logic module is being programmed.

After completion, simply reinsert the logic module into the base unit.

Auto increment – Function



Please mark a normal switching time or special program and click the button Auto increment.

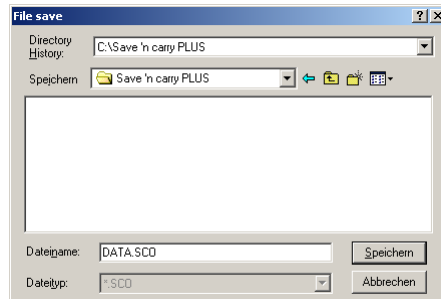


The selected switching time can be adjusted with a programmed offset.

Please choose your offset (days / hours / minutes) and click *Insert*.

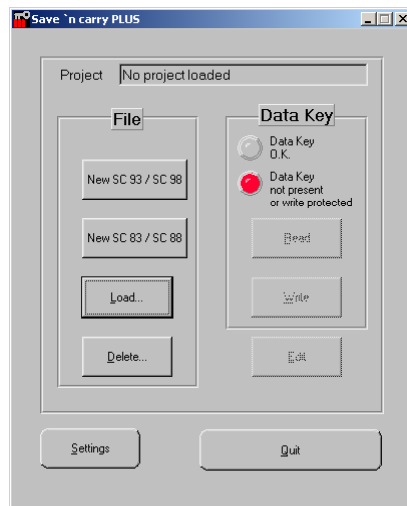
You can see the new switching time in the programming table.

Saving programs

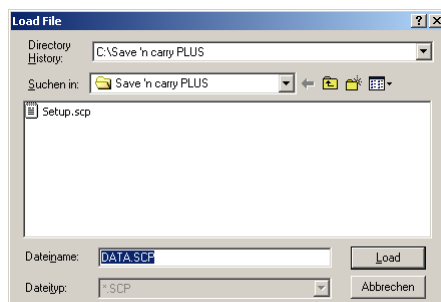


Click the **Save** button in the window programming table. The dialogue 'File Save' appears. Filename preselection is done using the name of the project. You can choose your folder and filename. Click **Save** to store your project.

Loading programs

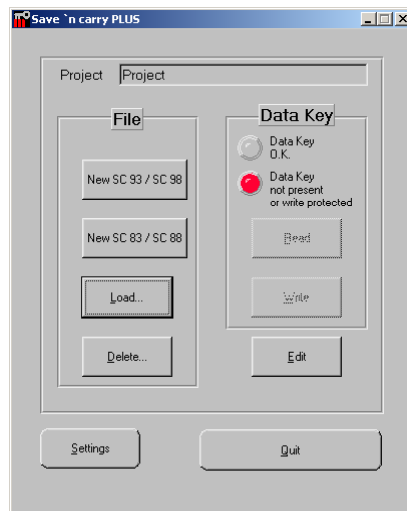


Click the button *Load* in the main window.



You will see the dialogue Load File and your stored projects.

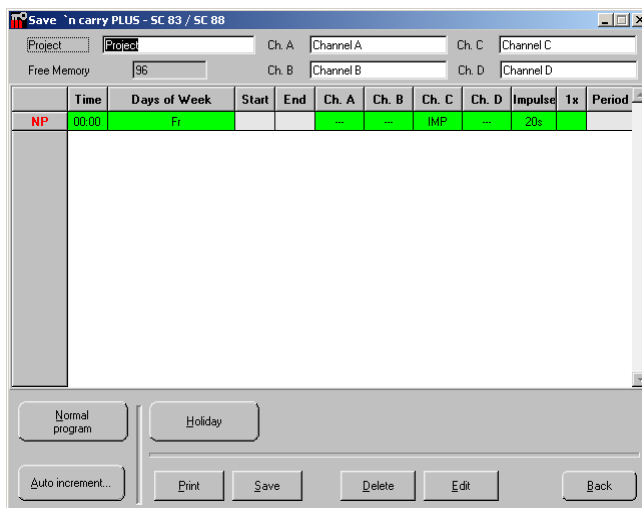
Choose your project by selecting (click on) and clicking the *Load* button.



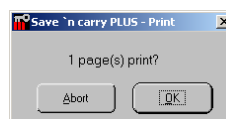
The name of the loaded project is shown in the main window.

To modify click the *Edit* button.

Printing programs



Click the *Print* button.



Confirm by clicking the *OK* button.

The content of the programming table will be printed.